



## Case Study





## Customer

Lipman Pty Ltd

## Website

<https://lipman.com.au>

## Scope of Work

- Digital Procurement Workflows
- Invoice Automation (RapidAP)
- Integration with ERP (Jobpac by Viewpoint)
- Project-Level Controls
- User Training & Change Management

## Industry

Construction & Commercial Building

## Location

Headquarters: North Sydney, NSW, Australia



## Overview

Lipman is a trusted name across New South Wales, delivering high-quality commercial, industrial, and educational projects. From hospitals and university precincts to schools and community centres, Lipman brings thoughtful construction and long-standing expertise to every build.

## Fast Facts

Lipman specialises in the design, development, and delivery of high-quality commercial, educational, and industrial projects throughout New South Wales.

## Key Services:

- Commercial Building Construction
- Industrial Developments
- Educational Facilities Construction
- Refurbishments & Fit-outs
- Design and Construct Projects

## Notable Projects:

- Orange Base Hospital Redevelopment
- University of Sydney: Abercrombie Precinct Redevelopment
- Parramatta Public School Refurbishment
- Kiama Community Centre Construction

## Opportunity

Although their project delivery was modern and efficient, Lipman's internal procure-to-pay (P2P) processes were stuck in the past. The accounts payable team was overwhelmed with manual invoice handling, and the lack of automation across procurement and finance slowed everything down. Jobpac, their ERP of choice, offered a solid foundation but limited visibility and no digital workflows. Vendor onboarding was prone to errors and delays. Lipman needed a smarter, more scalable solution to match the pace and complexity of their projects.

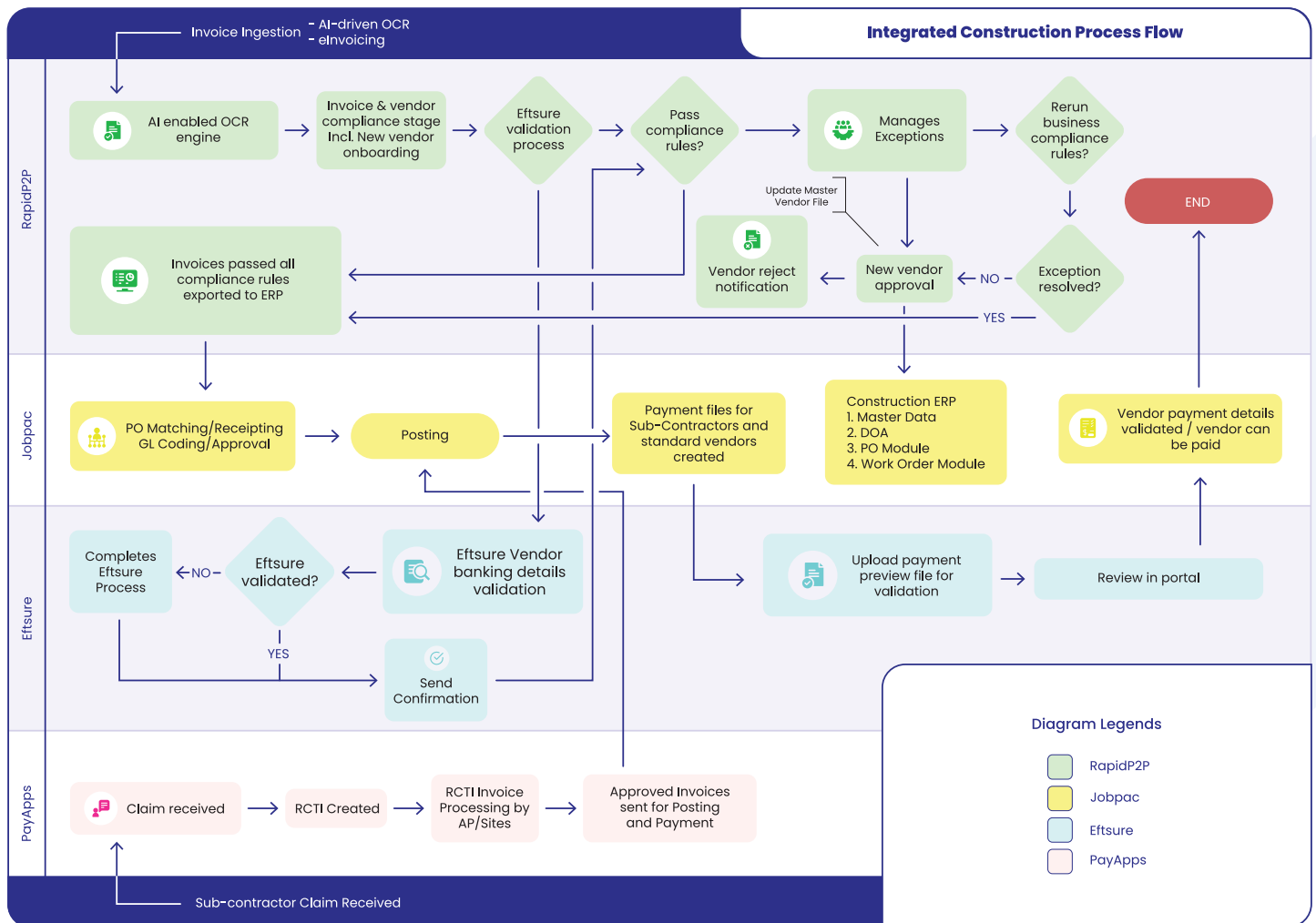
*"We were coming from a place where everything was entirely manual... The Efficiency Leaders tool had the best extraction rate by far... This integration with JobPac has positioned us ahead of the pack and allowed our team to refocus on higher-value tasks."*

*– Andrew Lander, Financial Controller*



# Solution

To modernise their systems without disrupting core operations, Lipman implemented the RapidP2P Suite by Efficiency Leaders. The rollout focused on automating key areas across procurement and finance, fully integrated with their existing Jobpac ERP and Eftsure.



## RapidP2P Modules Deployed:

- RapidAP (Accounts Payable)
- RapidVO (Vendor Onboarding)
- RapidVP (Vendor Portal)

The combination of Jobpac and RapidP2P created a best-of-both-worlds system. Jobpac provided the project-centric framework construction teams rely on, while RapidP2P layered in automation, flexibility, and real-time data exchange. Eftsure was also integrated for secure, efficient vendor onboarding and payment verification.

## Outcomes Achieved

Lipman now processes up to 3,000 invoices a month with minimal manual input. The AP team has reclaimed valuable time, and oversight across procurement and vendor compliance has improved dramatically. With automated workflows in place, payment risks have decreased and processes once slowed by admin are now running at full speed.

Staff report that the system is easy to use and quick to adopt. The support provided by Efficiency Leaders has been consistently strong, ensuring a smooth transition and ongoing success.

Most importantly, Lipman has created a finance and procurement function that's future-ready—automated, scalable, and aligned with the fast pace of construction delivery.

## Technologies

- ERP: Jobpac by Viewpoint
- Automation Suite: RapidP2P (RapidAP, RapidVO, RapidVP)
- Vendor Validation: Eftsure Integration

## Highlights

### Seamless Integration and Strong Collaboration

Lipman's partnership with Efficiency Leaders was marked by a deep integration between RapidAP and JobPac, complemented by strong collaborative engagement throughout the project. The solution also supported existing Eftsure workflows, ensuring continuity and minimal disruption.

### Operational Efficiency and Strategic Impact

By automating up to 3,000 invoices per month, Lipman achieved significant operational improvements, including a dramatic reduction in manual processes, faster invoice turnaround times, and better oversight of purchase orders and vendor management. These changes also helped reduce compliance and payment risks.

### Enhanced User Experience

Staff found the platform intuitive and time-saving, supported by the exceptional service provided by the Efficiency Leaders team.

### Looking Ahead

The implementation has given Lipman a competitive edge in the construction industry and positioned them for future growth, with advanced features like automated statement reconciliation supporting their long-term digital transformation goals.

## Why Lipman Recommends RapidP2P

The RapidP2P Suite has revolutionised Lipman's P2P operations, transitioning from manual, labour-intensive workflows to an integrated, scalable automation platform tailored for the construction sector. Efficiency Leaders has proven to be a trusted partner in Lipman's ongoing digital transformation.

*"Before RapidAP, everything was manual. Now, processing invoices is faster, easier, and the support has been fantastic."*

*– Abby Daher*

### **See what's possible when you modernise your procure-to-pay process.**

Lipman's success with RapidP2P shows that automation doesn't have to be complicated — and the results speak for themselves: faster turnaround times, reduced risk, and better oversight across the board.

If you're looking to simplify manual processes, strengthen compliance, or gain greater visibility across procurement, we can help.

Request A Demo →

